

KAISER Technology
for fast and secure installation



ECON-Technology

The ECON-Technology seal membrane guarantees air-tightness and provides you with a tool-free cable and conduit entry.



Page
138



FX⁴-Technology

The patented thread design of the FX⁴ strap screw allows for up to 40% quicker attachment of cavity wall boxes.



Page
138



KSK-Technology

The impact coupling of the innovative KSK-Technology allows for fast mounting and secure conduit installation without reworking.



Page
139

M20 / M25 entry
for all flush-mounting boxes



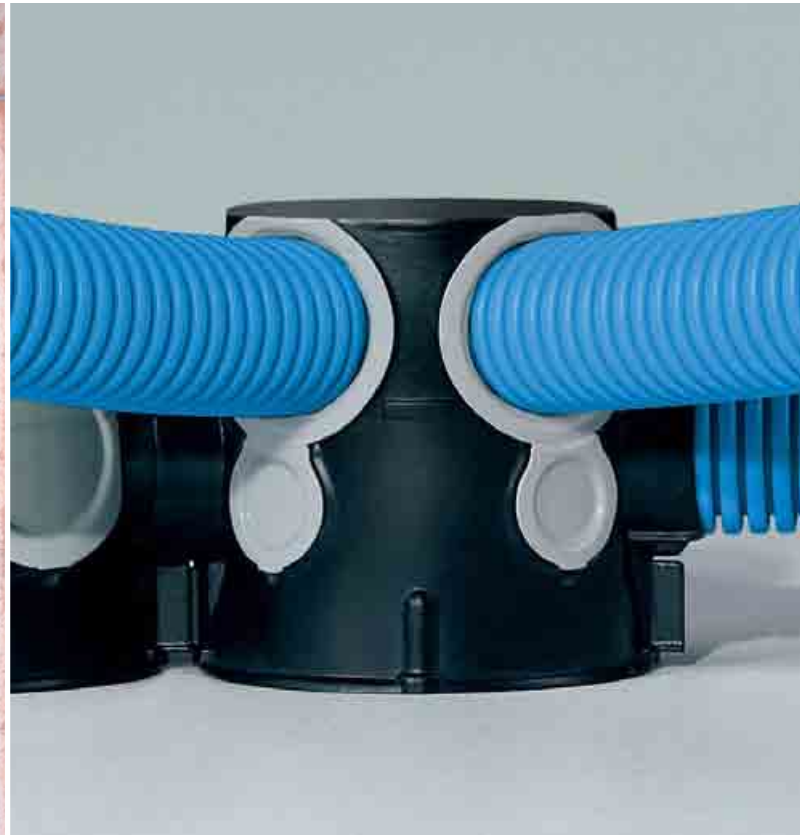
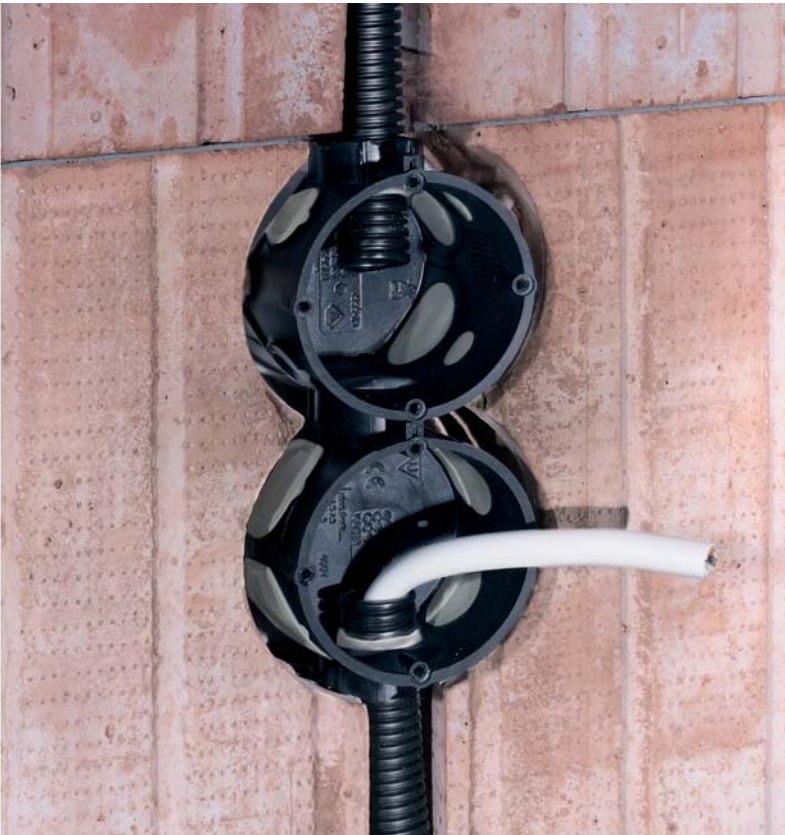
UP^{PLUS} is the new generation of KAISER flush-mounting boxes. They are now equipped with the M20/M25 support connectors and offer up to 15% more wiring capacity.

The newly developed and rotation-secure **M20/M25 combination supports** are now standard for all KAISER flush-mounting products. The variable conduit entry allows for M20 and M25 conduits to be used in a support. Further entry options for M20 and M25 conduits are located on the box area. 4 screw domes and 2 expanding clamp fields provide flexible attachment options for equipment. Larger box depths also offer considerably more space for installation.

- **M20 / M25 combi entry**
- **4 screw domes, 2 expanding clamp fields**
- **More room for installation**



Air-tight flush-mounting boxes with ECON-Technology



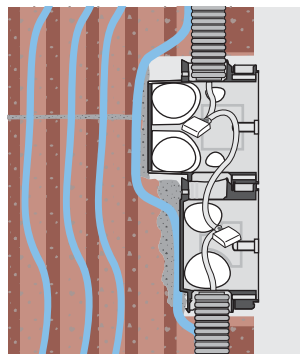
An **air-tight flush-mounting installation** is guaranteed by the elastic seal membrane of the ECON 10 and ECON 15 one-gang and one-gang junction boxes. They offer many options for conduit and cable entry and can be installed either with plaster or Klemmfix®.



ECON 10
one-gang box

ECON 15
one-gang junction box

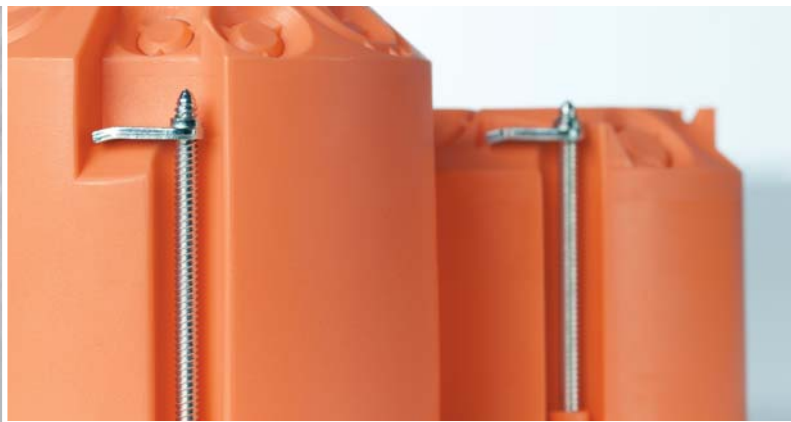
- **Air-tight installation space – guaranteed**
- **Tool-free cable/conduit entry**
- **Variable entry options**
- **More room for installation**



Air-tight installation

Further information on the ECON technology can be found in the technical appendix on page 138.

FX⁴-Technology
Strap screw for cavity wall boxes



The patented **FX⁴-Technology** provides you with the fastest screw attachment method for cavity wall boxes there has ever been. Its steep thread design enables the strap screw to achieve up to 40% faster screw attachment with maximum self-locking function. The new FX⁴-Technology is used throughout the KAISER cavity wall range.

- 40% faster attachment
- Patented thread design
- Excellent self-locking junction



FX⁴ screw

The patented step thread design makes it possible:

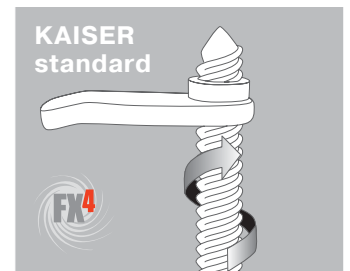
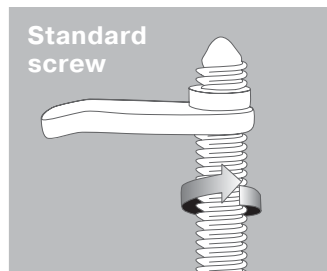
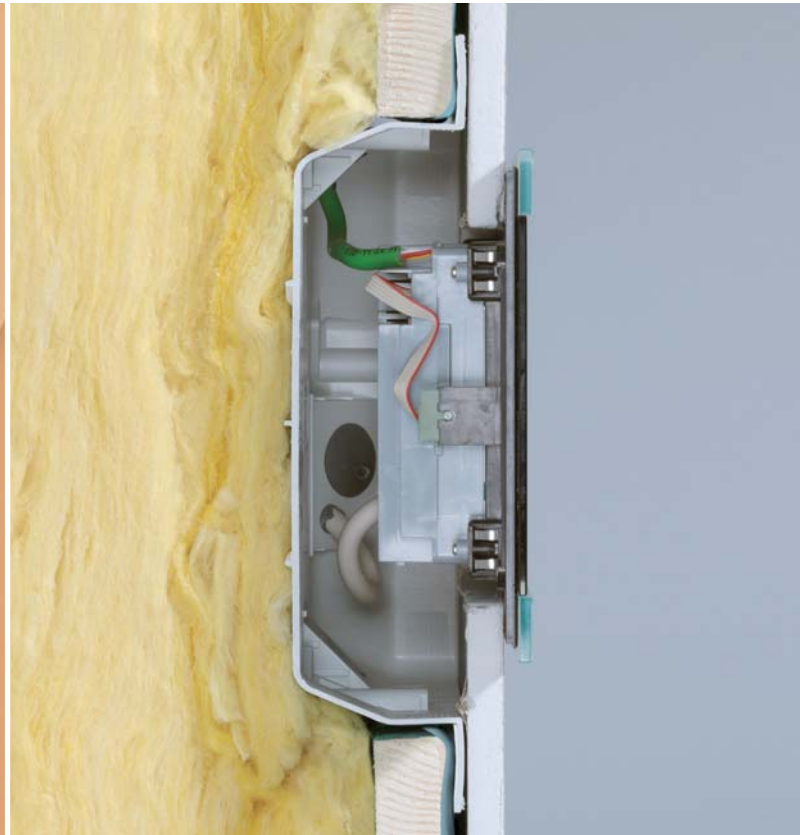


plate screws with FX⁴-Technology can be fastened up to 40% faster than conventional screws.

EnoX Air-tight electrical installation in the insulation level



EnoX is the flexible free space for installations according to Energy Saving Regulations (German EnEV) installation. If there is not sufficient space for the electrical installation level, the EnoX housing, which is only 60 mm deep, is inserted into the insulation level to provide an air-tight fit. An uncontrolled exchange of air is avoided by the air-tight housing with an elastic seal membrane. It also guarantees dust-proof installation.

- **Installation according to Energy Saving Regulations (German EnEV)**
- **No installation level required**
- **For ceilings and walls**
- **Tool-free conduit and cable entry**



EnoX installation housing
with ECON-Technology

HWD 90 cavity wall box
for fire protection walls



In the event of a fire, the integrated fire retardant coating reacts in a very short time. The material generates foam which reliably seals the installation opening in the fire protection wall. Even with opposing installation, the F90 (fire resistance of min. 90 minutes) wall remains secure despite the installation and without costly enclosures.



HWD 90
one-gang box

HWD 90
one-gang junction box

- For F30-F90 fire protection ceilings (fire resistance of min. 30 - 90 minutes)
- Without costly enclosures
- Opposing installation also possible
- Retrofitting also possible

DIBt-Zulassung
Für Bauteile der
Feuerwiderstandsklasse F90
nach DIN 4102-2

DIBt-Zulassung Z-19.21-1788

HWD 30 ceiling box for fire protection ceilings



Fire protection in the ceiling is guaranteed by the HWD 30 ceiling box. Up to fire-resistance class F30 (fire resistance of min. 30 minutes), it remains secure without mineral wool and with mineral wool up to F90 (fire resistance of min. 90 minutes). In the event of a fire, the integrated fire retardant coating immediately generates foam which seals the opening in the ceiling. Even when retrofitted, the HWD 30 provides protection against fire and smoke.

- For F30-F90 fire protection ceilings (fire resistance of 30 - 90 minutes)
- Without costly enclosures
- Retrofitting also possible



DIBt-Zulassung
Für Bauteile der
Feuerwiderstandsklasse F90
nach DIN 4102-2

DIBt-Zulassung Z-19.21-1788

HWD B15 cavity wall box for shipbuilding walls



The new HWDB15 fire protection boxes were developed for use in walls used in shipbuilding. With one-gang boxes, a maximum of two, and with one-gang junction boxes, a maximum of 4 cables up to Ø 11.5 mm can be configured. In the event of a fire, the integrated fire retardant coating reacts in a very short time. The heat generates foam which seals the installation opening. The B15 category separators remain secure without costly enclosures.

- For separators in category B15
- Without costly enclosures
- Retrofitting also possible



0801-07



Junction casing, ceiling and window exit
with innovative KSK-Technology

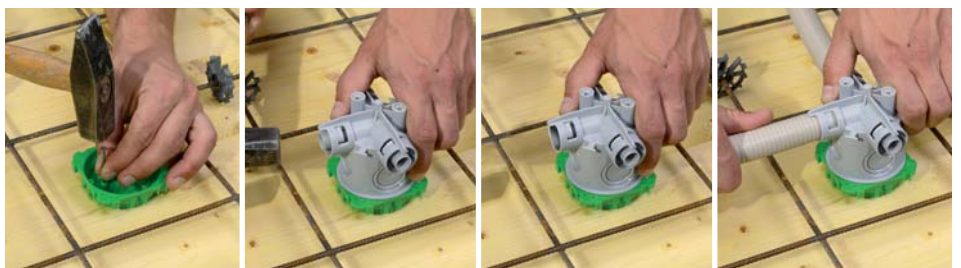


The new concrete construction range contains universal ceiling and wall exits as well as ceiling junction boxes.

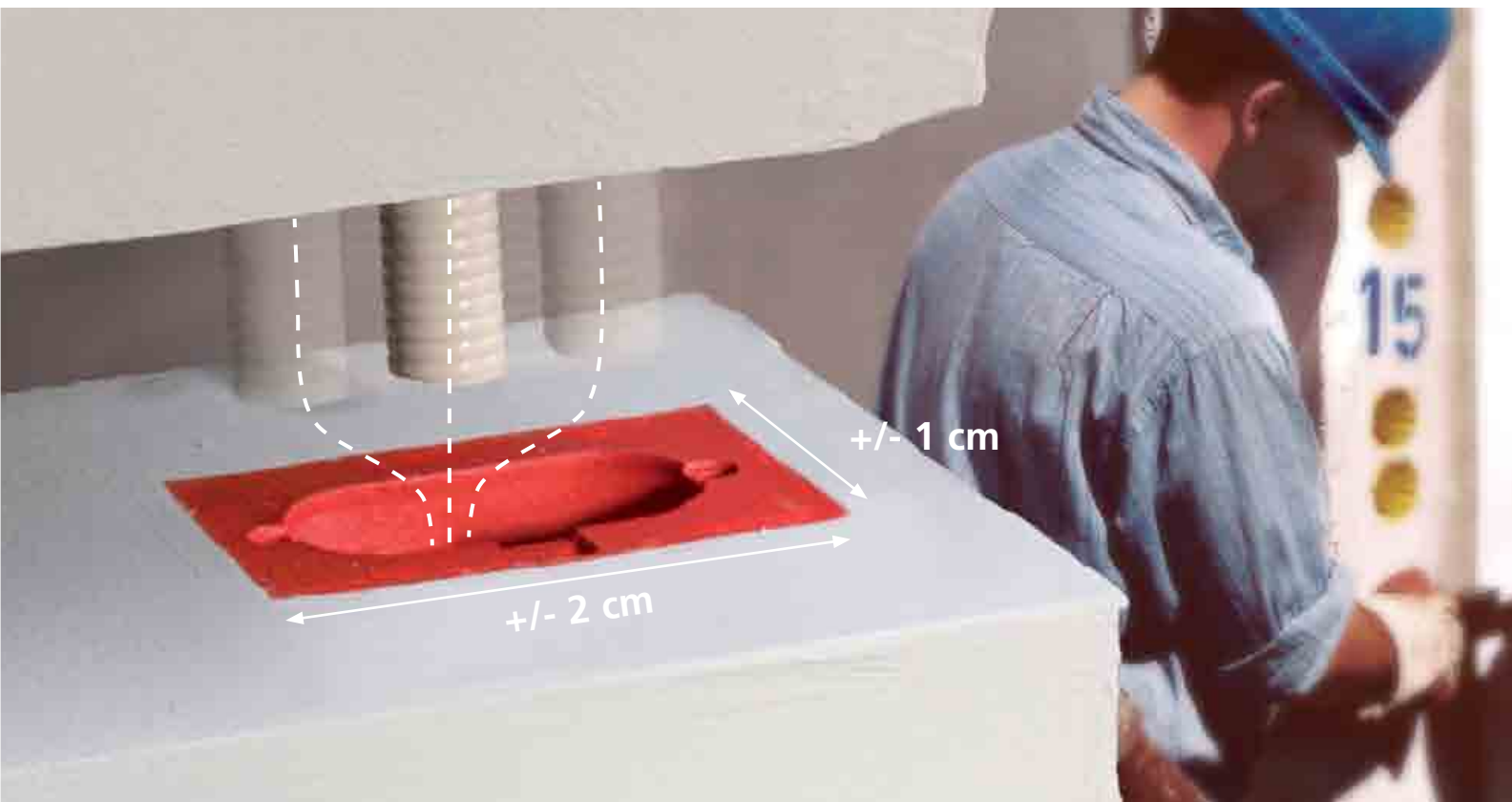
The integrated and innovative KSK-Technology allows the flexible conduit entry of crimped and unsheathed installation conduits through an opening without the need for a special tool. One hammer blow is sufficient.



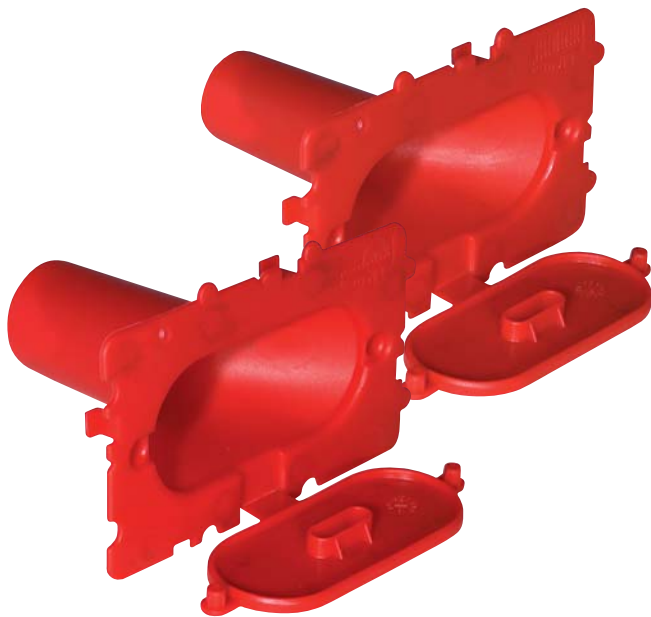
- **Universal screw surface**
- **Impact coupling for combi conduit entry**
- **Integrated conduit stopper**
- **No internal shortening of the conduits**



Oval funnel Innovations in concrete construction



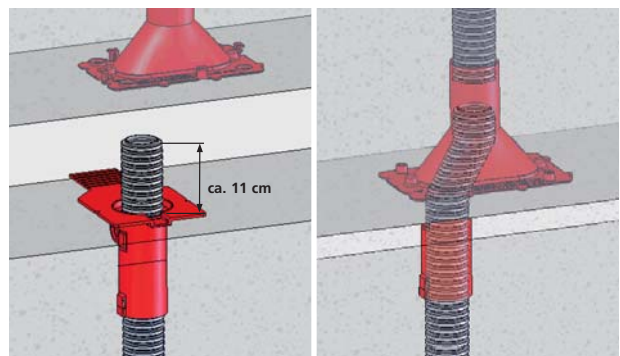
The **oval funnel** simplifies the precise joining of wall and ceiling panels with integrated installation conduits. It offers tolerance compensation of 2 cm lengthways and 1 cm laterally. Secure conduit connection is ensured with M20/M25 conduits.



M25 oval funnel

M20 oval funnel

- For M20 and M25 conduits
- Secure joining of electrical installation conduits
- Tolerance compensation in the transition
- For industrial prefabricated ceiling and wall elements as well as on-site mixed concrete



HaloX-O / HaloX-P
with KSK-Technology



HaloX-O

The new HaloX generation is equipped with the innovative KSK-Technology which guarantees rapid installation of the conduits without time-consuming reworking. The integrated conduit limit stop removes the need for internal shortening of the conduits as well as additional securing against sliding out.

45% more volume as well as the HaloX40 transformer tunnel provide maximum space with minimum intervention in the statics. Various front parts in round and square shapes always provide the ideal installation hole – even for facing concrete quality.

The integrated transformer flap provides thermal separation between light installation space and the transformer tunnel and protects the electronics against overheating and premature failure.

- With KSK-Technology
- 45% more volume
- HaloX40 tunnel for optimal statics
- Transformer flap protects against overheating



HaloX-P

KompaX® 1, 2, 3 with mineral fibreboard



KompaX® 1



KompaX® 2



KompaX® 3

The proven KompaX® installation housings are now also equipped with mineral fibreboard, which allows for variable and exact cut-outs for luminaires and loudspeakers. Inaccuracies in the installation of industrial prefabricated board panels can be corrected with the mineral fibreboard.

- For luminaires and loudspeakers
- Accurate, variable installation openings
- Any cut-out form possible
- Tolerance compensation with installation of board panels