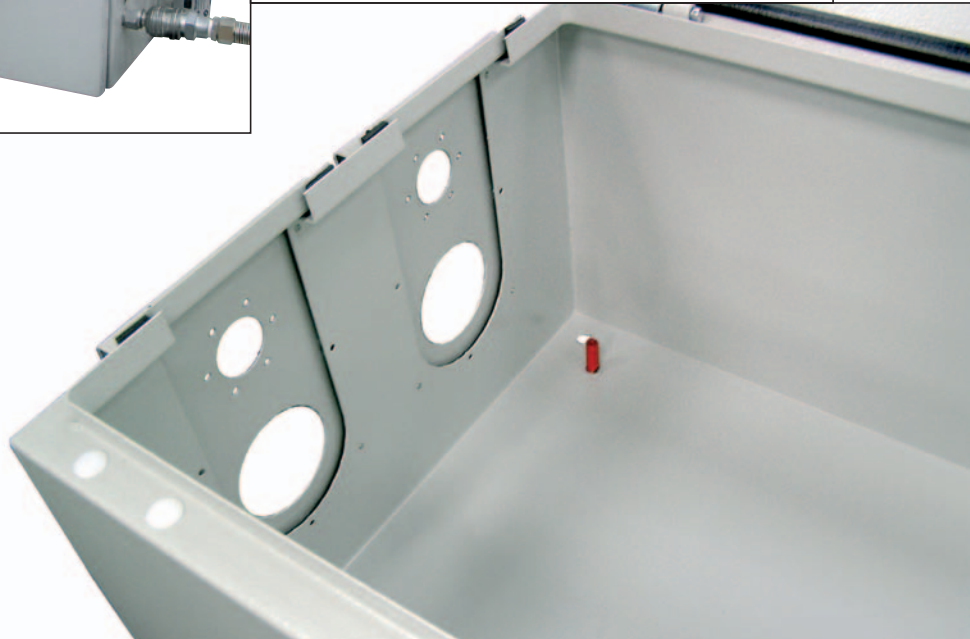
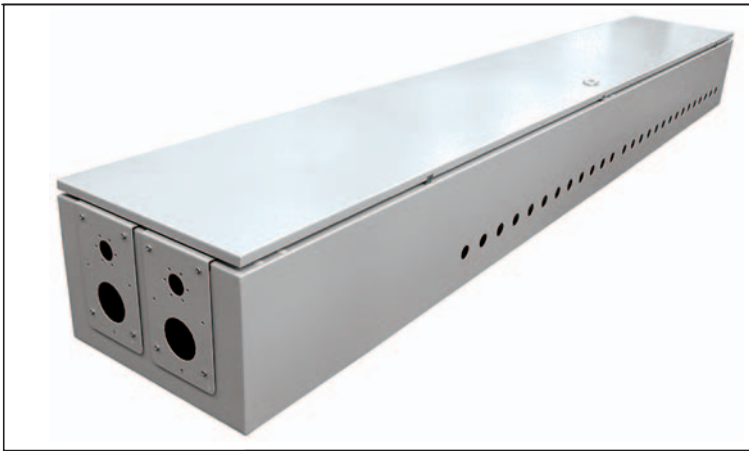


PERSONALISED solutions

A DIFFERENT DESIGN TO SUIT ALL TYPES OF NEEDS

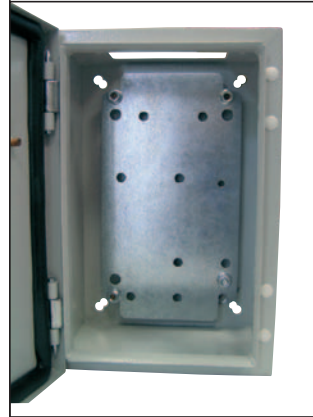
IDE offers the possibility of making metallic cabinets to adapt to each installation. Its versatile manufacturing process permits the production of any type of cabinet at very competitive prices and with very short lead times.

Sizes, shapes, dies, colours, made with high quality materials that satisfy the technical and quality parameters demanded by the market.

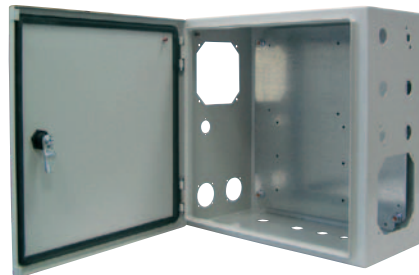


■ DIES

Moulds in body, door, assembly plate or cable gland lid, according to the needs of the installation



Possibility of making any size and shape of mould: round, square, hexagonal...



■ COLOURS

Possibility of painting the cabinets in any colour of the RAL chart (consult minimum quantities and delivery times)



The intellectual property of the design and drawings of the special cabinets belongs integrally to the customer who requests them. IDE has the obligation and undertakes to maintain secrecy in this regard.